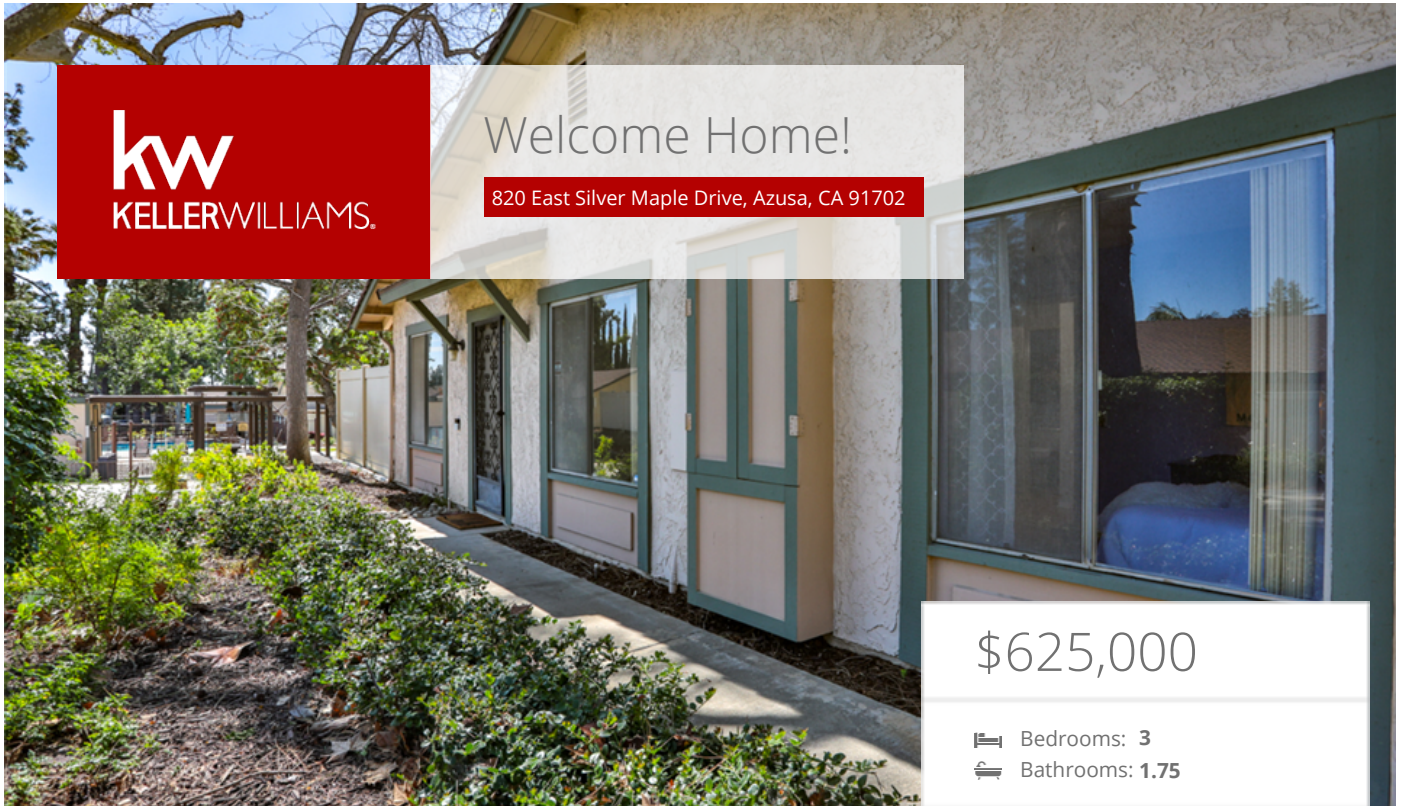




# Welcome Home!

820 East Silver Maple Drive, Azusa, CA 91702



## \$625,000

- 🛏 Bedrooms: 3
- 🚿 Bathrooms: 1.75

### EXTRAS:

- Single level living with no interior sta
- End unit with extra privacy and ope
- Living Space: 1,181 sq ft



Caleb Hanson  
CA DRE Lic.#01773995

📞 626-328-4199

## Property Description

Mature palms, pines, and sycamores welcome you to this beautifully maintained single-level end-unit home in the Sierra Palms community of Azusa. With no interior stairs and only a minimal step at the entry, the layout offers exceptional ease of living for a wide range of buyers. Whether you are downsizing from a larger home, seeking a more accessible floor plan, or moving up from a smaller condo, this home offers a rare combination of space, comfort, and convenience.

Inside, abundant natural light fills the home through large windows, creating a bright and inviting atmosphere throughout the living spaces. Attractive bamboo flooring adds warmth and character, and the thoughtful layout provides a natural flow between the kitchen, dining area, and living room that makes everyday living and entertaining easy.

The remodeled kitchen features soft-close drawers and cabinets along with generous storage and workspace. Kitchen appliances are included, making move-in simple and convenient. Central air and heat provide year-round comfort in every season.

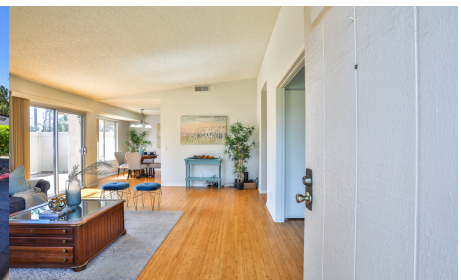
The spacious primary suite offers a peaceful retreat with a walk-in closet, a private en-suite bathroom featuring a walk-in shower, and its own patio access. From both the living room and patio, you'll enjoy open views because there are no buildings immediately to the east or south. This creates a sense of openness and privacy that is uncommon in many condo communities.

One of the most special features of this home is the vinyl-fenced private yard and patio area. Many condos do not offer a true outdoor yard space, but here you have room to relax outdoors, entertain friends, garden, or give pets space to roam. The patio area could easily be converted back to grass if desired. As an end unit with its own fenced yard and open views, the home offers a living experience that feels closer to a single-family residence while still benefiting from the convenience of HOA-maintained grounds.

Additional conveniences include a motorized garage door opener along with an included washer and dryer.

Sierra Palms is known for its mature trees, open green spaces, and park-like setting that gives the community an airy, peaceful feel. This particular home is located adjacent to several of the community's amenities, making it easy to enjoy them whenever you like. Cool off on warm days in the community pool, host gatherings in the picnic area, or shoot hoops on the basketball court. The HOA also offers a program that allows residents to apply for a third parking space for households with three vehicles.

The location offers exceptional convenience. Azusa Pacific University sits directly across the street, and Citrus College is just about half a mile away. Citrus Crossing is only minutes away and features shopping, restaurants, and a movie theater. Outdoor enthusiasts will appreciate the nearby San Gabriel River Trail for biking and walking, as well as the beautiful new Rosedale Great Park just half a mile away.



MORE ON:

[www.820eastsilvermaple.com](http://www.820eastsilvermaple.com)