



Glassell Park Retreat with ADU and Finished Garage — A Rare Multi-Home Compound

2842 West Avenue 33, Los Angeles, CA 90065

\$1,690,000

- 🛏 Bedrooms: 5
- 🚿 Bathrooms: 4

EXTRAS:

- Living Space: 2,025 sq ft
- Lot Size: 7,961 sq ft

Property Description

Glassell Park Retreat with ADU. Property features 1,350 sq ft main home + 675 sq ft permitted ADU, offering 2,025 total usable living space across both structures. The 1,350 sq ft main home offers 3 bedrooms and 3 bathrooms, reimagined with open-concept flow, a chef's kitchen with custom cabinetry and stone counters, and a sunny breakfast nook. The luxurious primary suite features dual closets, backyard access, and a spa-inspired bath with wood paneling, double vanity, and frameless shower.

The property expands with a fully permitted 675 sq ft ADU featuring 2 bedrooms and 1 bath—ideal for rental income, guests, or a private studio and there is also rare finished 2 car garage. A must see!

Outdoors, enjoy an artistically landscaped yard with multiple areas to lounge or entertain, including a pergola-shaded deck for al fresco dining, yoga, or gatherings. Dodger Stadium and Crypto.com Arena just 20 minutes away.



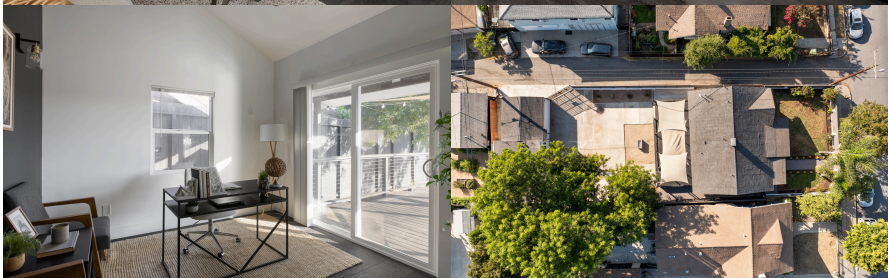
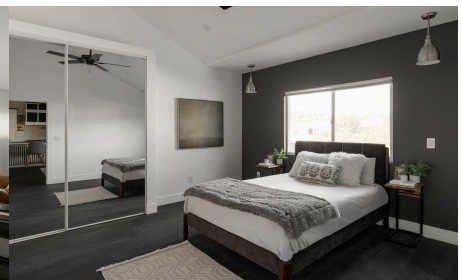
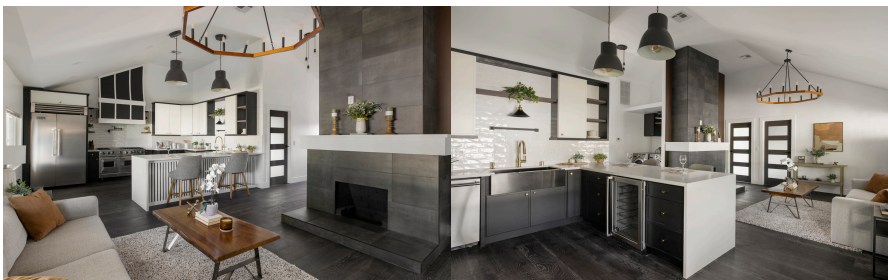
Joe Quinteros
01038914

📞 951-545-2758



Nick Quinteros
02242443

📞 951-314-6067



MORE ON:
www.2842WAvenue33.com