

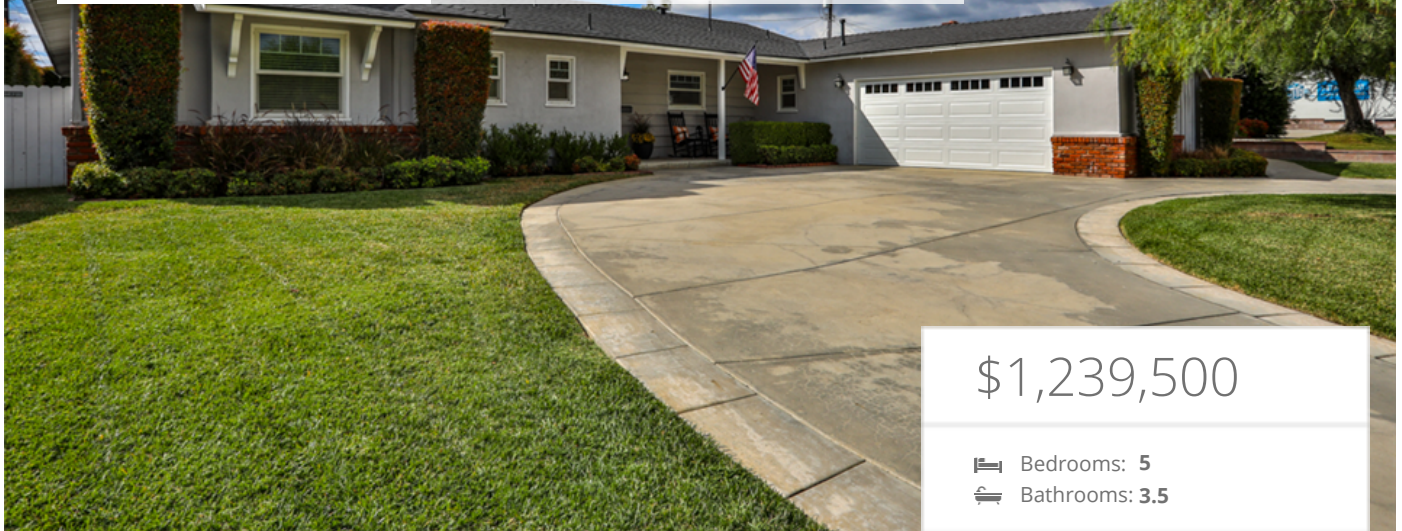


Vista

Sotheby's
INTERNATIONAL REALTY

Geoff@GeoffHamill.com Presents... Newly Imagined Home In Claremont Highlands

1585 Mural Drive, Claremont, CA 91711



\$1,239,500

🛏 Bedrooms: 5
🚿 Bathrooms: 3.5

EXTRAS:

- Living Space: 2,300 sq ft
- Lot Size: 10,000 sq ft

Property Description

Beautiful newly reimagined home in desirable Claremont Highlands neighborhood. Quality built by Olin-Lewis Homes. Inviting curb appeal with circular driveway, mature trees, and lush landscaping.

Features a 1 story floor plan with 4 Bedrooms + Den/Office (former 5th bedroom) with full closet and 4 Bathrooms with granite counter tops. Dual primary master bedroom suites, perfect for multi-generational living. Great room with 5 large windows to let in plenty of light and provide a view of the secluded backyard. Spacious Living room with wood burning fireplace with gas log lighter. Remodeled "dine-in" kitchen featuring Norm Tessier Custom cabinetry, granite countertops and stainless steel appliances. Newer flooring installed throughout most of house. Indoor laundry/mud room off kitchen. New roofing just installed. 50 gallon water heater with recirculating pump.

Privacy hedge (Monterey Brush Cherry) around the backyard. Covered patio area and dog run. Enjoy entertaining and family fun year-round.

Convenient distance to Griffith Park, neighborhood shopping, and Sumner Elementary School, a 2025 California Distinguished School.

For more information or a private viewing, please contact Listing Agent Geoff Hamill directly via Geoff@GeoffHamill.com or (909) 621-0500. Geoff also has access to additional "Coming Soon", "Off Market", "Pocket", "Silent", and "Whisper" listings that are not found in the MLS or other websites. Thank you.



Geoff Hamill
CalDRELic# 00997900

📞 909-621-0500



MORE ON:
www.