

COMPASS

4201 Pennsylvania Avenue Unit A1, Glendale, CA 91214

\$779,000

🛏 Bedrooms: 3
🚿 Bathrooms: 2.5

EXTRAS:

- Living Space: 1,689 sq ft
- Lot Size: 50,088 sq ft

Property Description

Boasting with tons of natural light, this stunning unit has it all with an open floor plan, a kitchen island, and direct access to the garage. Love to entertain? This home is THE place to host your next event. Have people gather around the modern kitchen island for some drinks, host an intimate dinner party around the dining table, or invite friends over for the next Super Bowl watch party in the living room! Boom, just planned your housewarming. You're welcome. Come up the stairs to where all three bedrooms are and wind down after a long day. Walk into this colossal (to use "spacious" is an understatement) master bedroom with it's own private balcony and check out the closet of all closets. Cue heavenly music - clothes lovers rejoice! You think it ends there? Don't even get me started with that rainfall shower and soaking tub, equipped with a double sink vanity. That's right, no more hogging the sink in the mornings. Everyday is spa day in this house. Walk down the hall and you got your laundry on the right and bathroom with a shower on the left. Kids currently sharing a room? No more! But don't worry, they can still have their shared space outside and hang out on the balcony. Just a stone's throw away to the 210 Freeway and Foothill Blvd, going to work and running errands has never been easier!



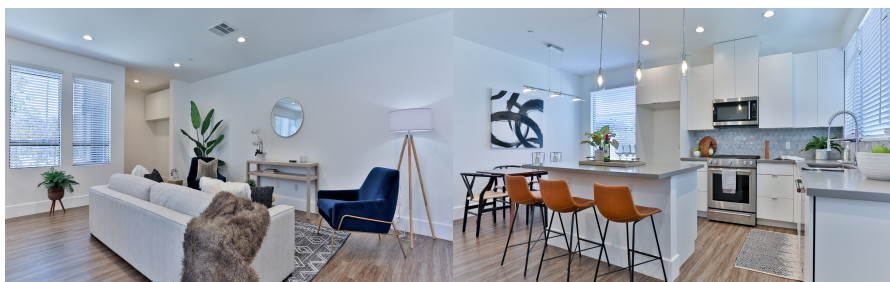
Sarah Chung
01963579

📞 213-374-0832



Kenya Reeves-Costa
01734058

📞 323-251-8626



MORE ON:

www.4201PennsylvaniaAve.com