



Investor Opportunity

702 South Soto Street, Los Angeles, CA 90023

\$805,000

 Bedrooms: **6**
 Bathrooms: **4.75**

EXTRAS:

- Living Space: 2,576 sq ft
- Lot Size: 4,673 sq ft

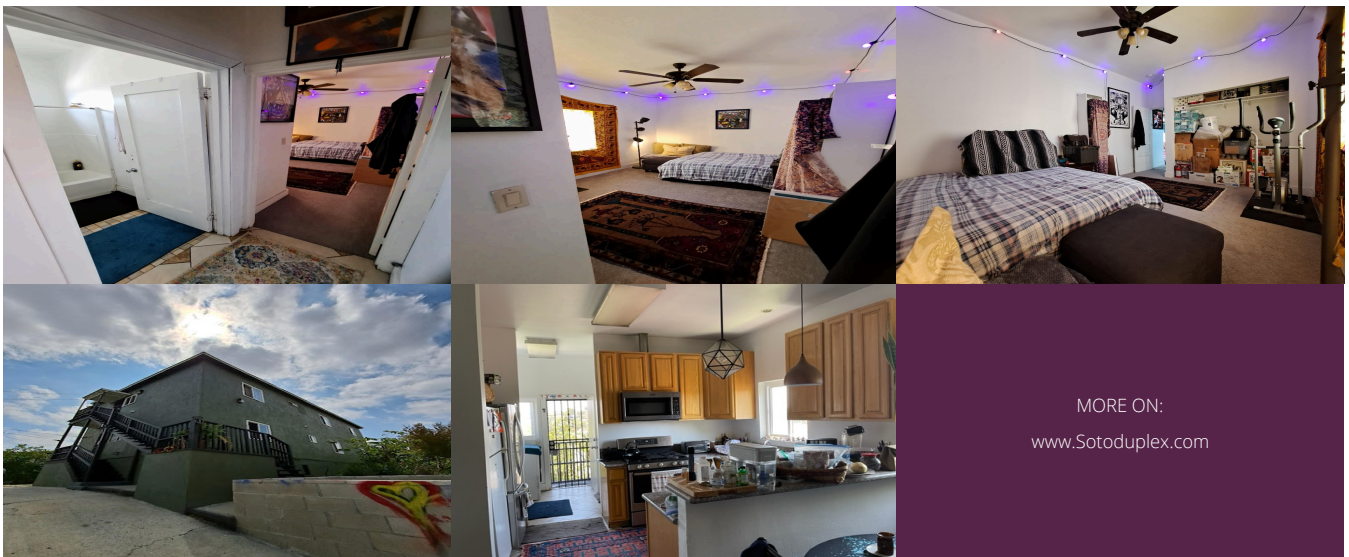


Lejon Nall
CalBRE Lic. #01987536

 **714-408-8265**

Property Description

Top of the Hill Duplex. LAC1 Zoning Downstairs is a 3 Bedroom, 2.5 Bath Upstairs is a 3 Bedroom 1.5 Bath Upstairs has an outside Balcony with view of downtown LA Skyline and mountains. Landscaped yard has multiple fruit trees, vines, bushes and flowers. Off street gated 2 car parking. Two exterior storage areas. Potential for ADU. Short distance to Schools, downtown LA, Chinatown, Arts District, 6th Street Bridge Parkway, Mariachi Plaza Union Station, Dodger Stadium, and Little Tokyo. Both units with Washer/Dryer Hookups. Several major freeways close by. Ocean breeze coming from the west in the evening.



MORE ON:
www.Sotoduplex.com