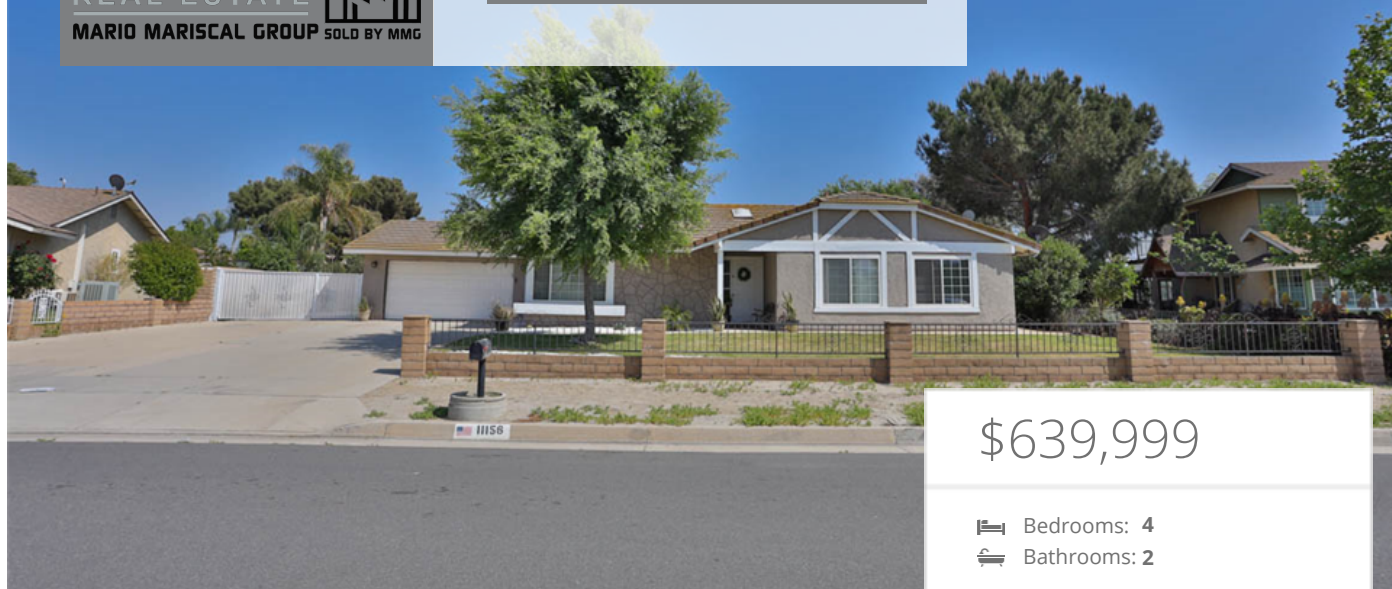


## BEAUTIFUL HORSE PROPERTY

11156 Pala Place, Jurupa Valley, CA 91752



**\$639,999**

🛏 Bedrooms: 4  
🛁 Bathrooms: 2

### EXTRAS:

- Living Space: 1,749 sq ft
- Lot Size: 27,443 sq ft

### Property Description

Upgraded horse property with RV parking in the highly desired sky county of Jurupa Valley! This beautiful home boast 1800 sq ft. of living space on a large 25,265 sq lot. 4 bedrooms, 2 bathrooms and 2 car attached garage! Upon entering this home you will find an inviting open concept floor plan and many upgrades like , fresh exterior and interior paint, laminate flooring, upgraded patio and new horse stalls. Mahogany cabinetry with quartz counter tops and back splash. The possibilities are endless with this amazing backyard, centrally located to shopping centers 15 and 60 freeways !



Mario Mariscal  
CalBRE Lic.# 01761780

📞 562-673-2226



MORE ON:  
[www.11156palaplace.com](http://www.11156palaplace.com)