

THE DOMISTEAM
REALTORS kw

Mid Century Modern Home

16416 Janine Drive, Whittier, CA 90603

\$950,000

🛏 Bedrooms: 3

🛀 Bathrooms: 2

EXTRAS:

- Living Space: 1,485 sq ft
- Lot Size: 18,345 sq ft

Property Description

Fall in love with this mid-century modern home in prime Northeast Whittier Location. This 3 bedroom 2 bathroom home features an open kitchen with quartz counters, imported German linoleum flooring and large windows allowing natural light to flow throughout the home. The spacious and well-maintained backyard features a work shed and an additional shed/pottery shack allowing endless opportunities to customize to your needs. Other features throughout this stunning home include; spacious master bed & bath suite, central air & heat, updated electrical, copper plumbing, living room with cozy fireplace, and detached two-car garage. This home is walking distance to schools and offers plenty of space to entertain family and friends for generations.



Linda Domis

00571375

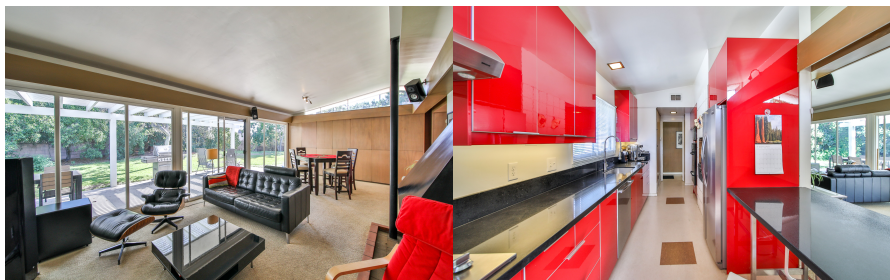
📞 562-884-5373



Ryan Domis

01969771

📞 562-458-6947



MORE ON:
www.16416Janine.com