



Beautiful Home

25709 Hawthorne Place, Newhall, CA 91381

\$1,250,000

🛏 Bedrooms: 4

🛀 Bathrooms: 3

EXTRAS:

- Living Space: 2,792 sq ft
- Lot Size: 9,390 sq ft

Property Description

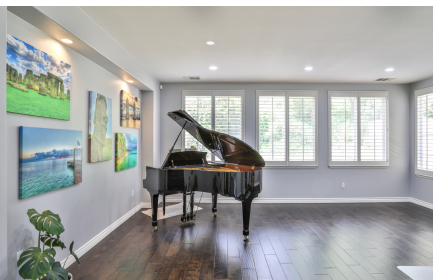
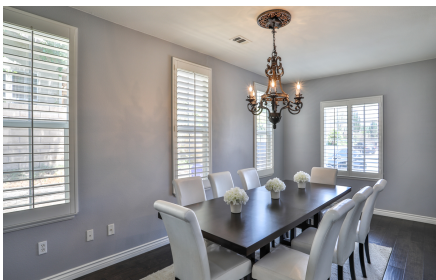
Welcome Home!! Walk on in to your redone hardwood flooring in the beautiful community of Stevenson Ranch. Enjoy all the beauty within the many upgrades the home has to offer along with the comfort of the 24hr security. Be pleased by the space provided from the extended formal dining area on to your upgraded quartz countertop in the kitchen. Kick up your feet while you relax to watch a movie in front of your custom entertainment center or decide on hosting a fun gathering in your spacious backyard under the covered patio with a built in barbeque. Such a beauty. Hurry up and make it yours.



Patsy Cuevas

DRE #02040412

📞 626-712-8585



MORE ON:
www.25709Hawthorne.com