



Welcome Home!

1426 Steffen Street, Glendora, CA 91741

1426

\$875,000

🛏 Bedrooms: 4
🚿 Bathrooms: 2

EXTRAS:

- Central Air
- Fireplace
- Patio
- Living Space: 1,664 sq ft
- Lot Size: 7,681 sq ft



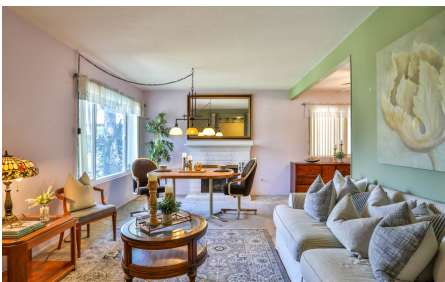
Caleb Hanson

CalBRE Lic.#01773995

📞 626-328-4199

Property Description

Check out this sweet home on a cul-de-sac on the north side of Glendora just five houses away from Glendora High School. Refresh your soul as you take in the beautiful mountain views from the front yard and the large window in the living room. The front porch with its masonry accents offers a warm welcome to you and your guests. The French-door entry adds both architectural appeal and the ability to move large things in and out more easily. The high-quality, security-screen doors provide extra peace of mind and the option for fresh air with fewer bugs. Imagine the memories you can make by the cozy fireplace and how many options you have with four bedrooms, separate living and family rooms, and a large covered patio. Cook up a great meal in the kitchen, which features easy-to-clean Corian counters, a breakfast bar, recessed lights, and tons of cabinet space. The primary bedroom has its own ensuite bathroom and its own sliding door to the back patio. Dual-pane windows, extra attic insulation, and a newer central heating and air conditioning system combine to keep you comfortable in all seasons. If you want to cool things down without running the A/C, use the whole-house fan. Unwind on the covered back patio to the sound of the water falling into the koi pond. The patio cover is aluminum, which means it won't need painting and termites won't eat it. Relax in the spa, and if you'd like more shade, just push a button to extend the motorized awning. Enjoy the freshest fruit from your own fig, lime, orange, lemon, tangerine, and peach trees. The backyard shed is included for extra storage. This location gives you convenient access to all the essentials. You can play a round of golf, enjoy a variety of restaurants, work out at the gym, catch a movie in the theater, make a late-night run to Donut Man, get groceries, go to the post office, visit four parks, hike Big Dalton Canyon Trail, and more all within 10 minutes' drive, per Google. Make sure you look at the video and 3D tours! Welcome home!



MORE ON:
www.1426Steffen.com