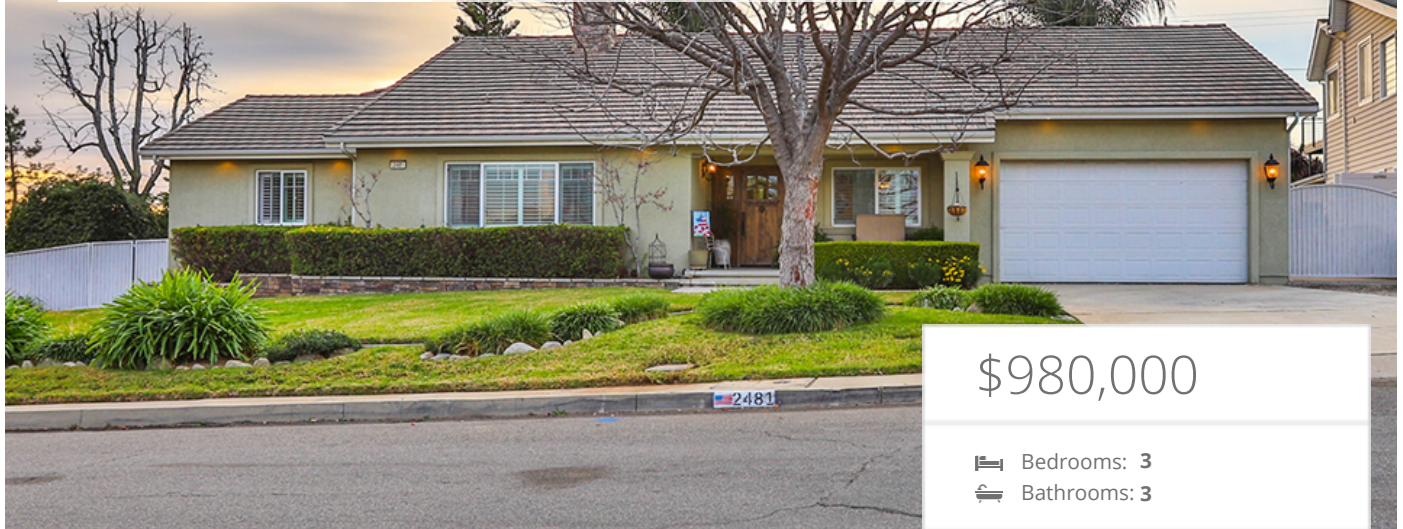




DAVID REID REAL ESTATE  
*Real Estate as an Investment*

# Welcome

2481 Mesa Terrace, Upland, CA 91784



## \$980,000

🛏 Bedrooms: 3  
🚿 Bathrooms: 3

### EXTRAS:

- Bonus Room
- Open Floor Plan
- RV Access/Parking
- Living Space: 2,681 sq ft
- Lot Size: 26,528 sq ft



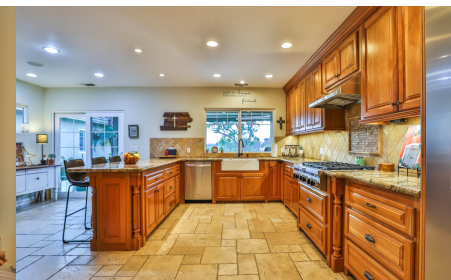
Theresa Dorf

01879853

📞 909-297-9176

## Property Description

Beautiful single story traditional style home located in the prestigious San Antonio Heights, nestled in the foothills below Mt. Baldy. This gorgeous home promotes a life of relaxation. From the beautiful entry way, to the inviting family room that leads to the gourmet kitchen. The flooring throughout the house has wood flooring. The kitchen boasts KitchenAid 6 burner cooktop, built in refrigerator & oven that were installed in 2018. The kitchen is accented with many beautiful custom made cabinets. The Master suite has a beautiful tiled bathroom, a soaking tub with jets & separate shower area. The closet in the Master suite is every woman's dream closet with built in cabinetry & drawers. 2 additional bedrooms with adjoining bathrooms & an office. The entire home has dual pane windows with wood shutters. The plumbing in the entire house was redone done with copper piping in 2004. In approx 2019 2 new water heaters were installed. The home has dual HVAC units with smart thermostats & a surround sound system that can be heard throughout the house & patio. The garage is an oversized garage 955 sf, with a custom workshop area. The home is on septic system, a new tank was installed approx 5 years ago. The north side of the home has a large RV parking area with RV hookups & clean-out. 1/4 water share is included in the purchase of the home. The beautiful backyard has a large grassy area for pets to enjoy, with fully matured fruit trees.



MORE ON:  
[www.2481MesaTerrace.com](http://www.2481MesaTerrace.com)