

The Cosmopolitan Group

Hollywood Pied-a-Terre

7320 Hawthorn Avenue 224, Los Angeles, CA 90046

\$499,000

🛏 Bedrooms: 0

🛁 Bathrooms: 0

EXTRAS:

- Balcony
- Central Air
- Fireplace
- Living Space: 550 sq ft
- Lot Size: 36,439 sq ft

Shaye Sullwold

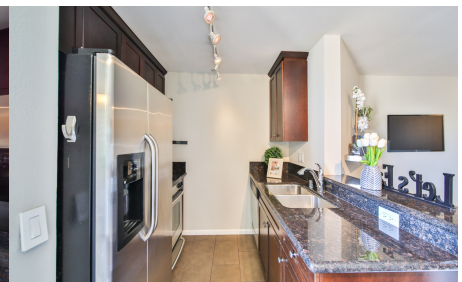
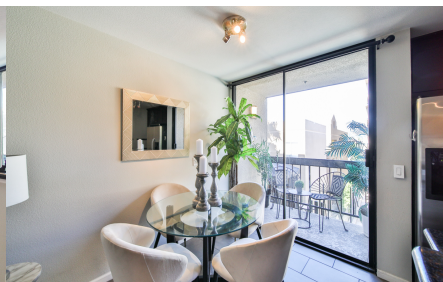
DRE #01907783

📞 310-944-5993

Property Description

This Junior One Bedroom is perfect as your new home or Pied-a-Terre. Enjoy the afternoon sunshine and escape the sound of the City with this interior unit that overlooks the pool with a peek-a-boo view of the Hollywood Hills. This Open Concept, bi-level unit is perfect for entertaining with Stainless Steel appliances and a Gas Fireplace. The step up bedroom has a nice size bathroom, with separate vanity area and a huge walk in closet. The buildings amenities include a fitness center, pool, spa and gated access.

Secure garage space with charger.



MORE ON:

www.7320HawthornAvenue.com