



Large Buena Park Home with ADU / Guest House

6705 Mount Lowe Drive, Buena Park, CA 90620

\$1,330,000

🛏 Bedrooms: 5  
🚿 Bathrooms: 3

**EXTRAS:**

- Living Space: 2,461 sq ft
- Lot Size: 7,000 sq ft

## Property Description

This stunning remodeled pool home is a modern, turn-key gem in a prime location. Just five miles from Disneyland, two miles from Knott's Berry Farm, eight miles from the beach, and twenty miles from LA, it's close to everything.

The open floor plan features an oversized living and dining room with high ceilings, large bright windows, and rich wood floors. The remodeled kitchen boasts quartz countertops, marble floors, and custom cabinetry. The first floor includes three spacious bedrooms and two fully remodeled bathrooms with modern fixtures, quartz, and marble.

Upstairs, the luxurious master suite offers a custom bath with a walk-in marble shower, double sinks, and an oversized tub. A large bonus room adjacent to the master suite is perfect for a nursery, office, or entertainment. There is also a large guest bedroom.



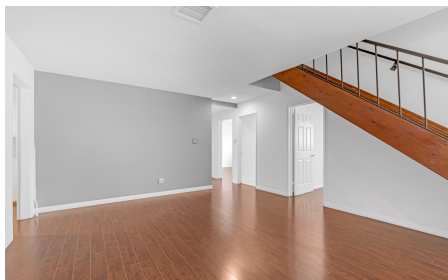
Eli Strickland  
CalBRE Lic. #01991218

📞 909-910-6654



Jack Strickland  
02200999

📞 909-991-9261



MORE ON:  
[www.6705mountlowedrive.com](http://www.6705mountlowedrive.com)